



UNIVERSAL HEALTH COVERAGE: *holding countries to account*

CASE STUDY: the mental health workforce

Jill ILIFFE

Executive Secretary

Commonwealth Nurses and Midwives Federation

Treasurer

Commonwealth Health Professions Alliance

Mental ill health is the third leading cause of disease burden in the world, predicted to be the leading disease burden by 2030.

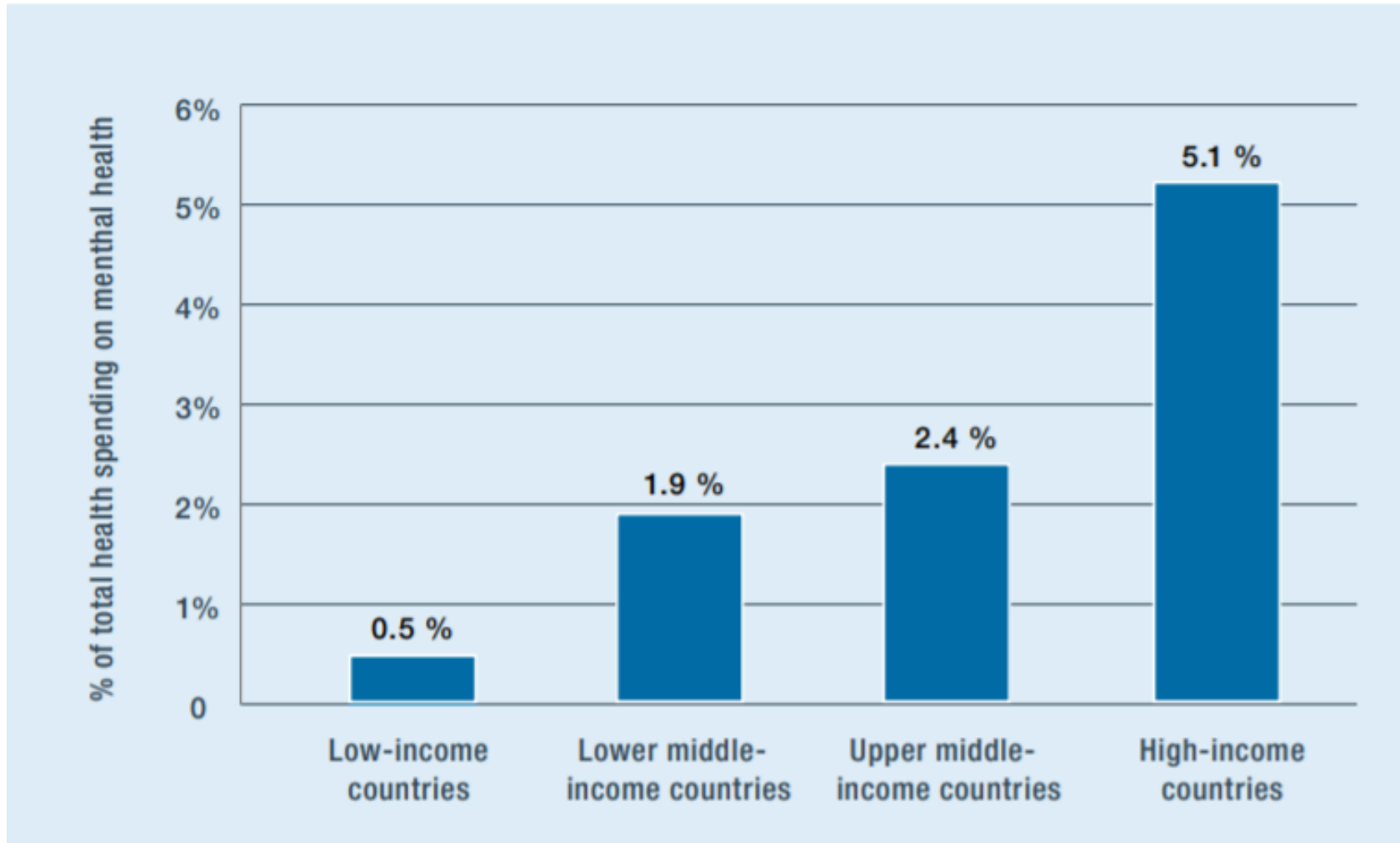
In 2010, the global economic impact of mental ill health was approximately US\$ 2.5 trillion and this cost is estimated to increase to US\$ 6 trillion by 2030.

Mental ill health is typically left off the list of non-communicable diseases (NCDs), however it alone is estimated to account for over US\$ 16 trillion or one third of the overall US\$ 47 trillion anticipated spend on NCDs over the next 20 years.

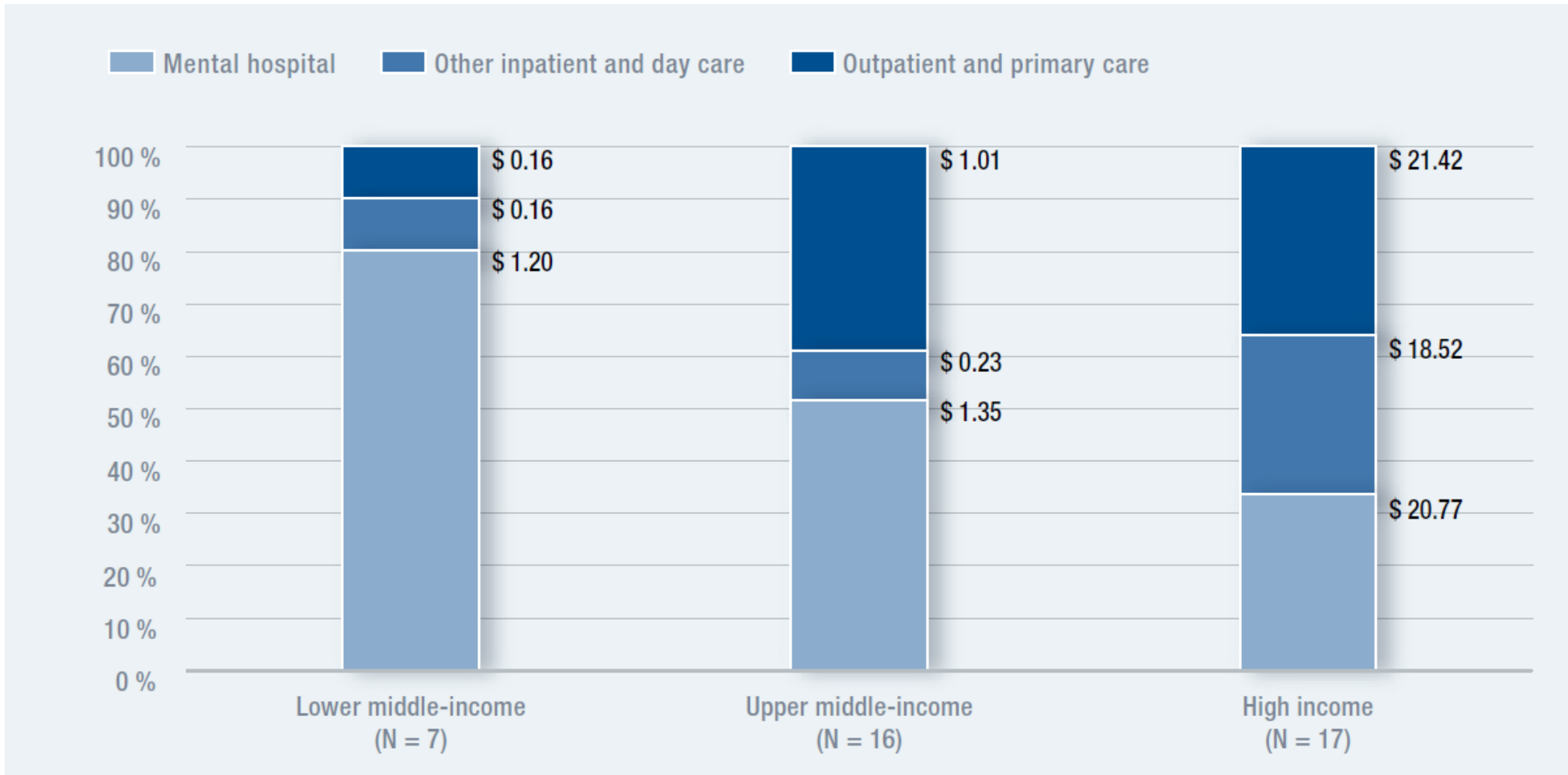
Additionally, mental disorders are common co-morbidities of NCDs, infectious diseases, and poverty.

http://www3.weforum.org/docs/WEF_Harvard_HE_GlobalEconomicBurdenNonCommunicableDiseases_2011.pdf

Mental health spending as a proportion of total health spending

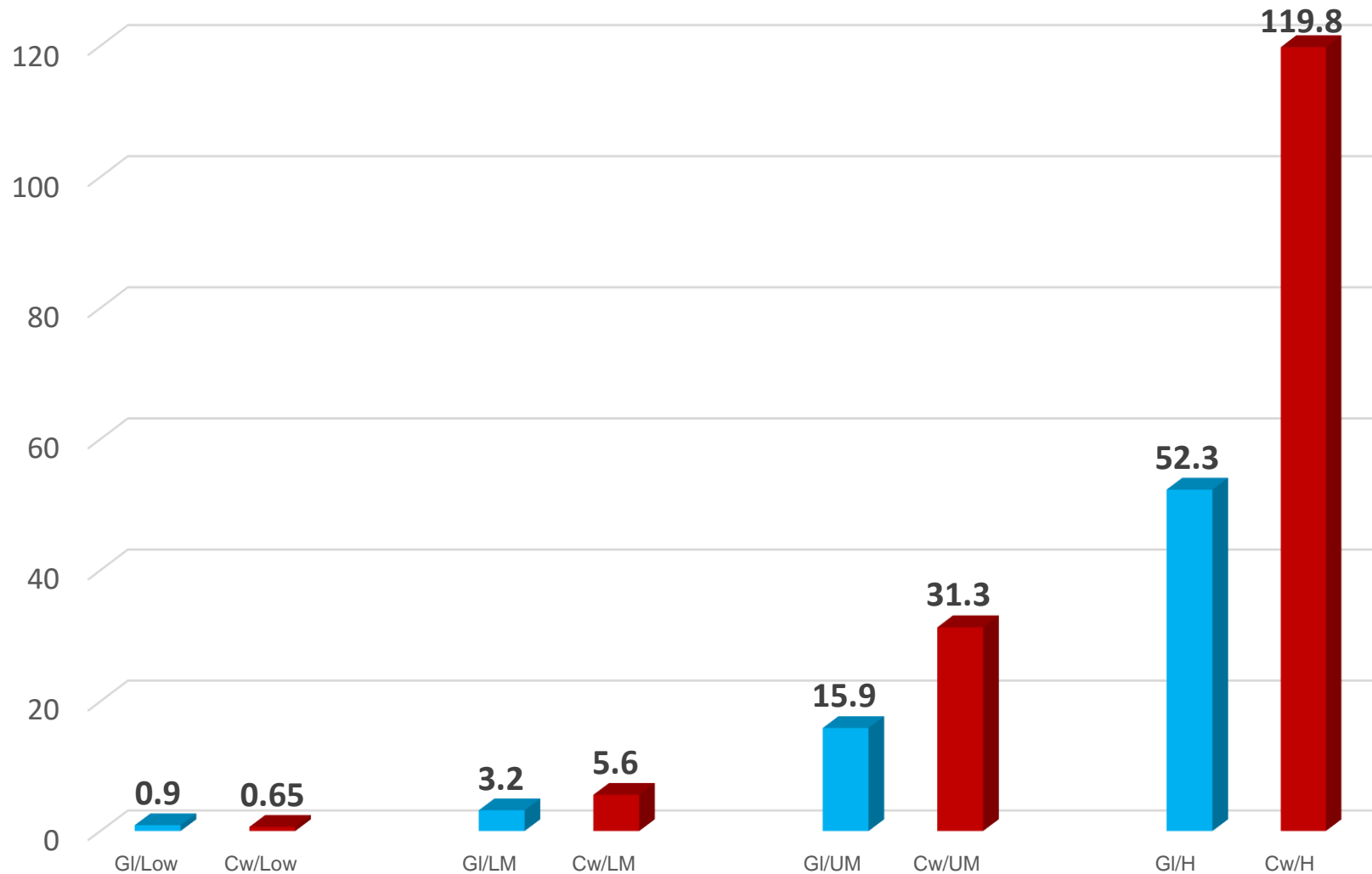


Distribution of mental health expenditure per capita by care setting

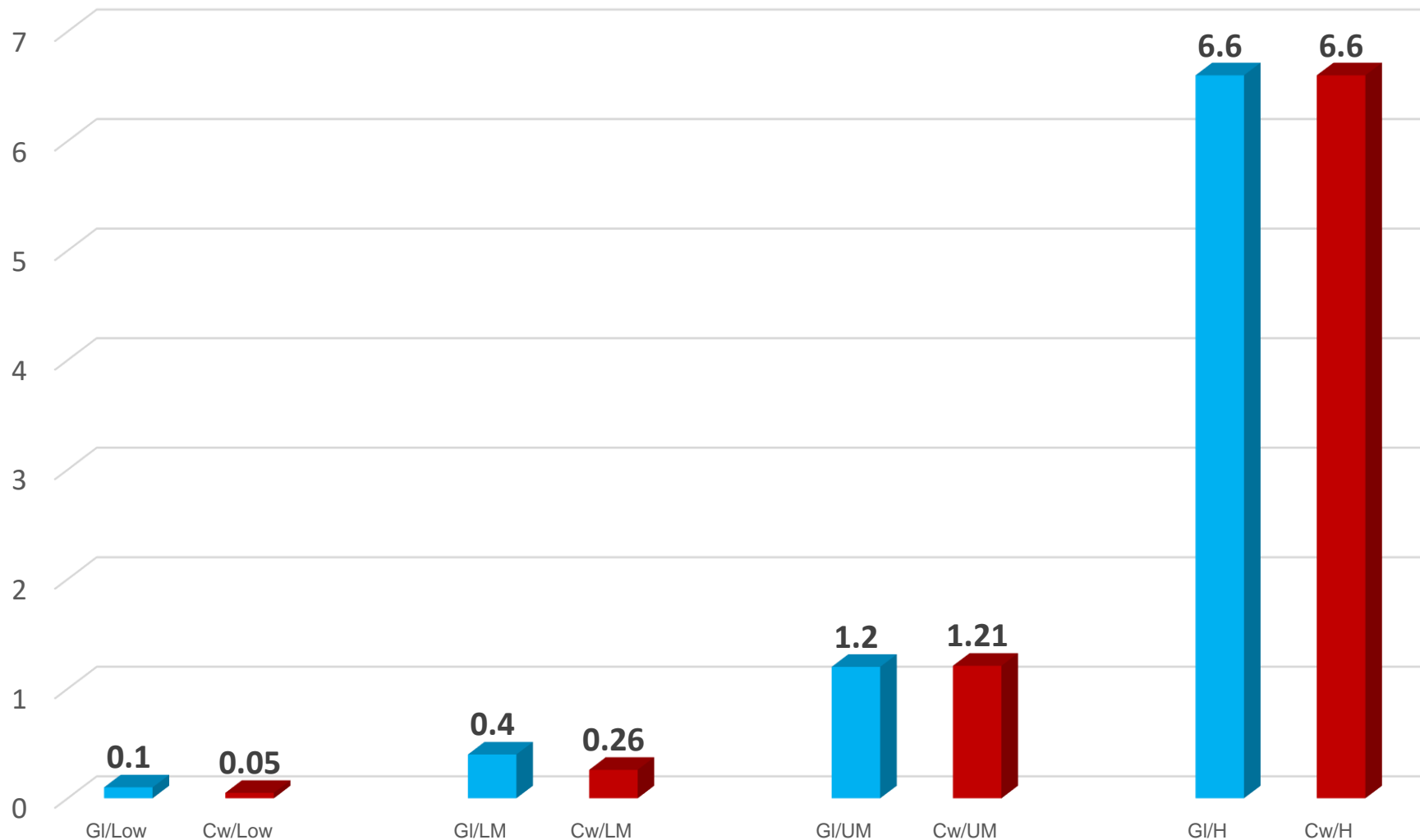


| | |
|---|----|
| Number of Commonwealth countries participating in data collection: | 46 |
| Countries not participating in data collection: (Antigua and Barbuda; Bahamas; Cameroon; Canada; Saint Kitts and Nevis; Singapore; Sri Lanka) | 7 |
| Countries which provided financial data on health spending: (Median mental health expenditure per capita) | 46 |
| Countries which provided mental health specific <u>financial</u> data: (Australia, Ghana, Jamaica, New Zealand, Pakistan, United Kingdom) | 6 |
| Countries which provided total mental health <u>workforce</u> data: | 39 |
| Countries providing mental health workforce data by category: | 30 |

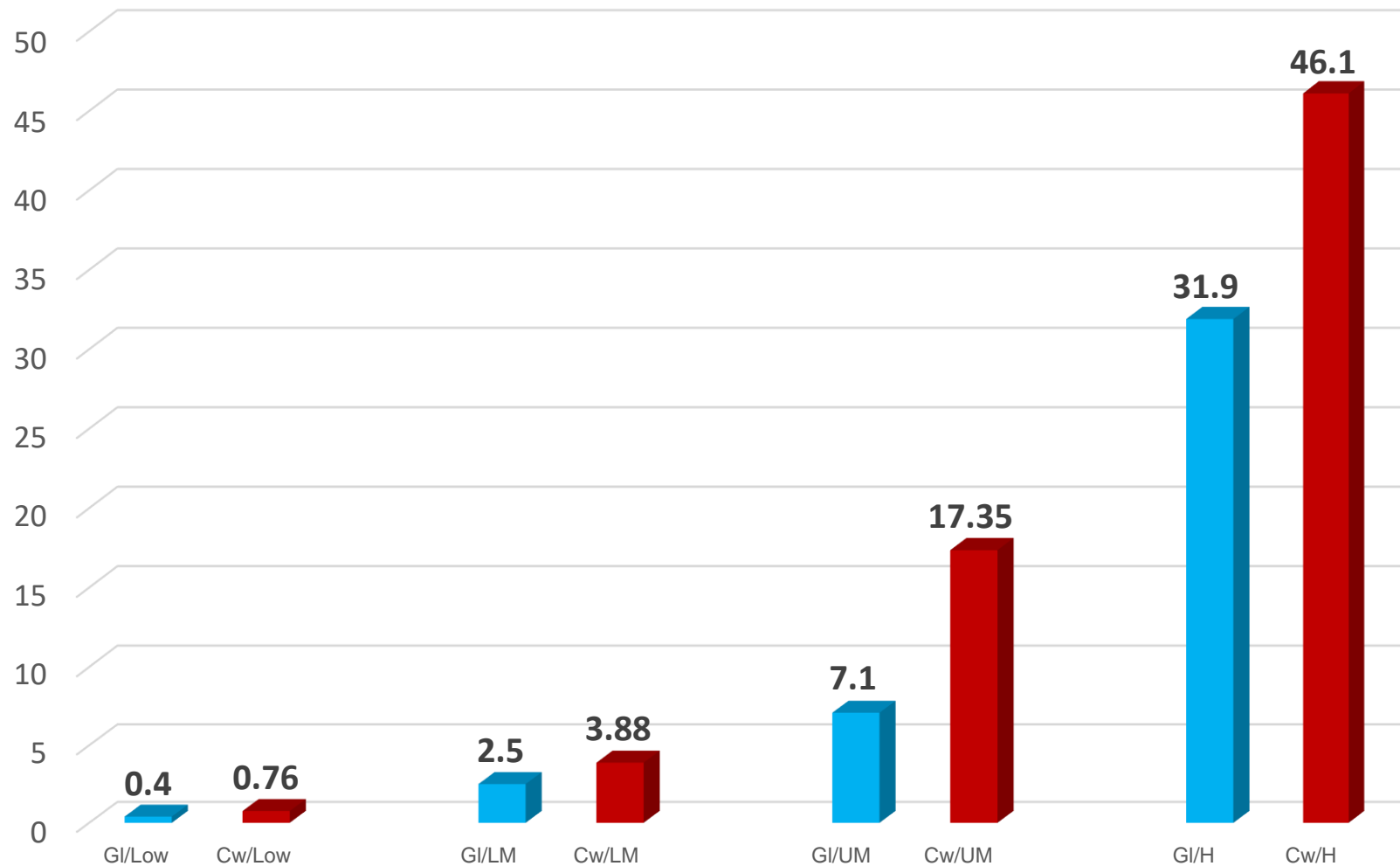
Mental health workforce per 100,000 population by Global and Commonwealth by World Bank income group



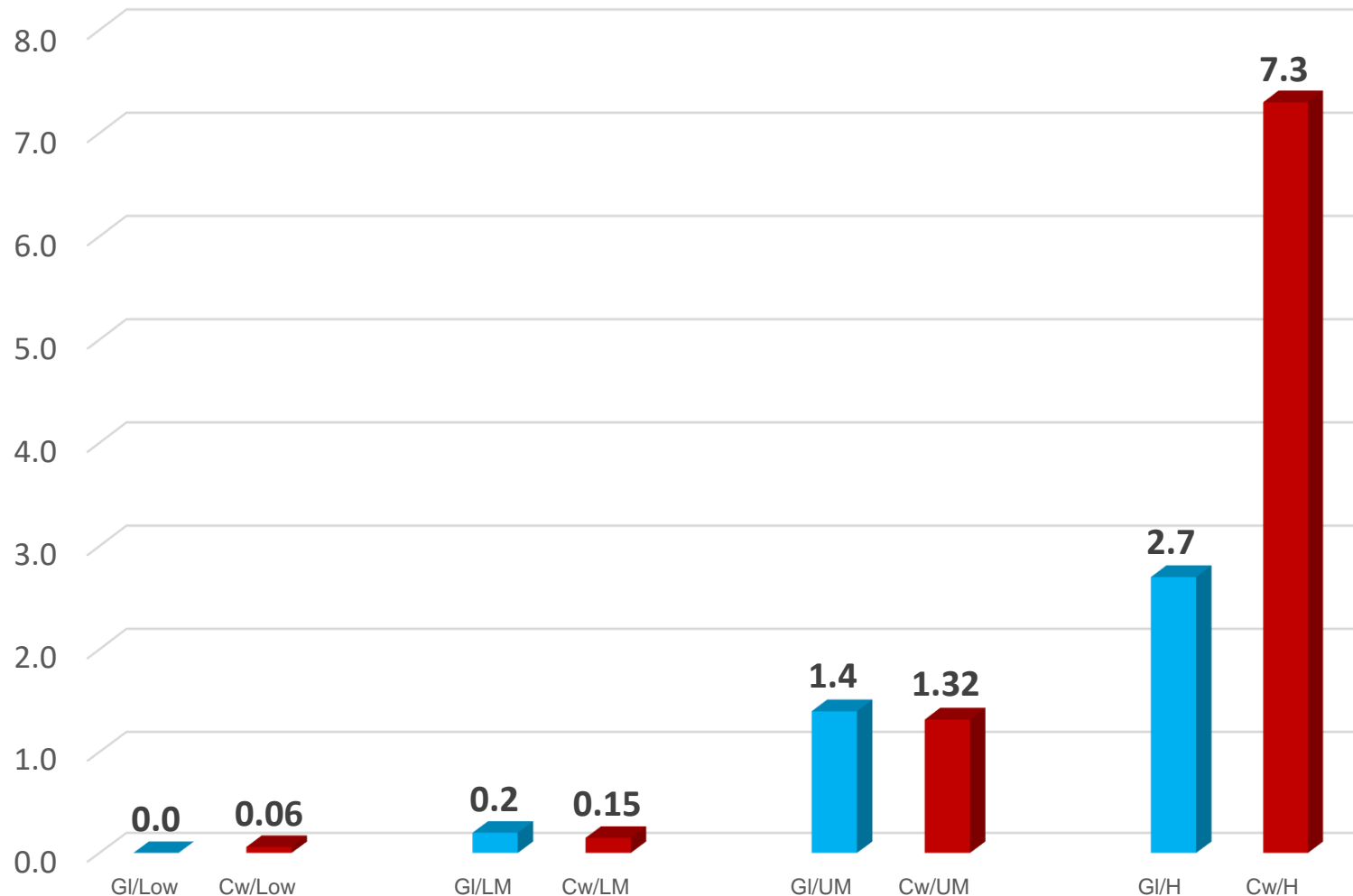
Psychiatrists per 100,000 population Global and Commonwealth by World Bank income group



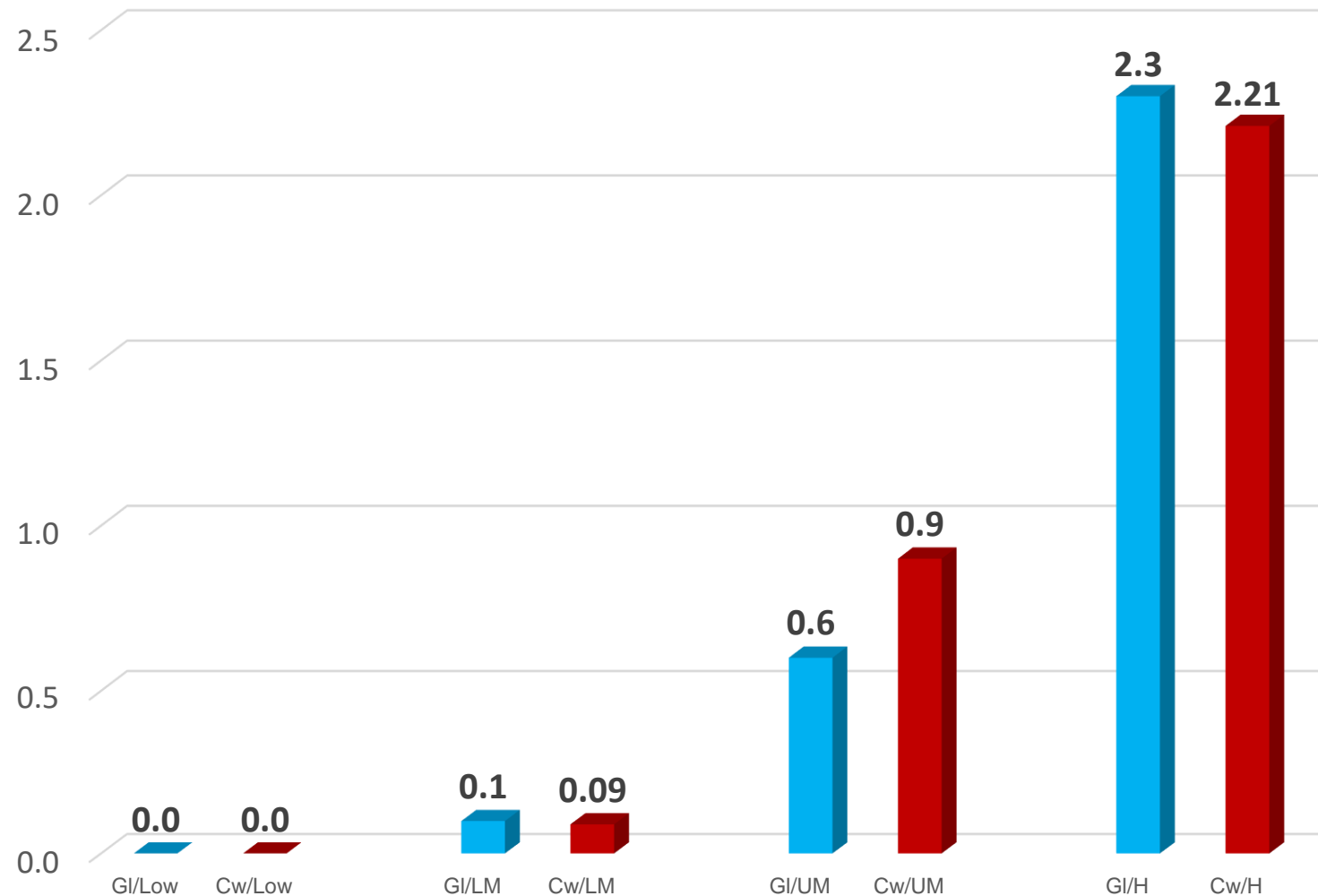
Nurses per 100,000 population Global and Commonwealth by World Bank income group



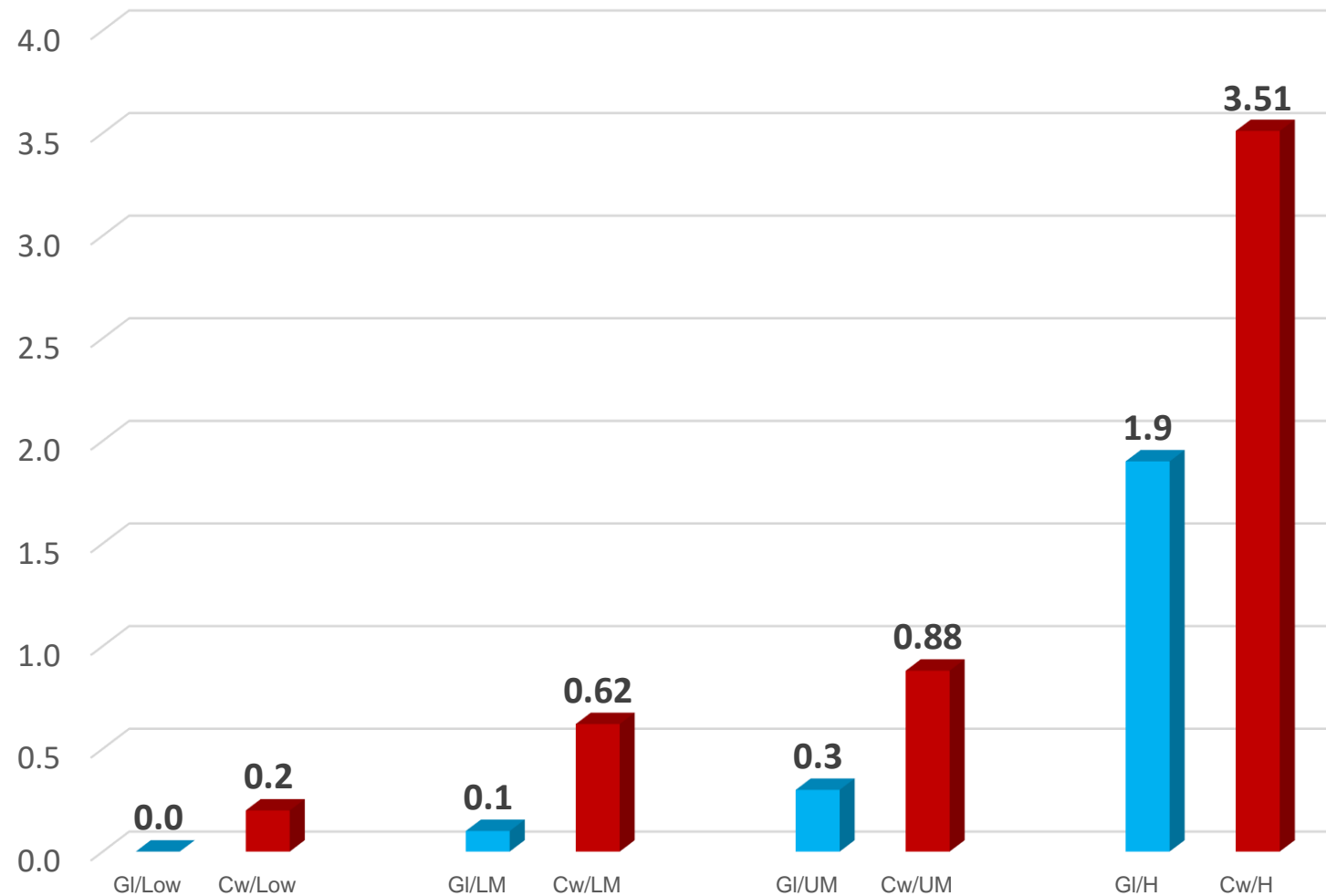
Psychologists per 100,000 population Global and Commonwealth by World Bank income group



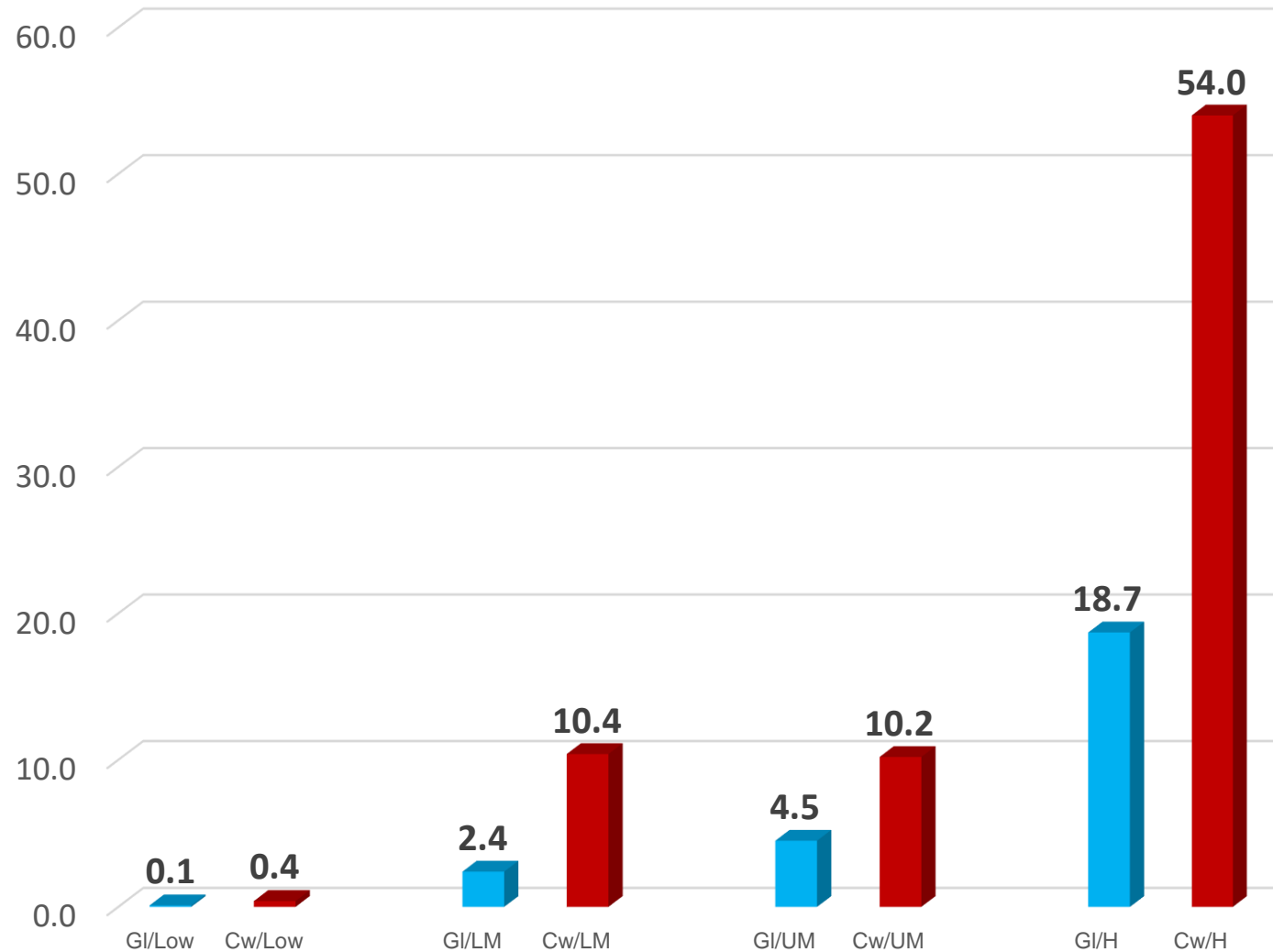
Social Workers per 100,000 population Global and Commonwealth by World Bank income group



Occupational Therapists per 100,000 population Global and Commonwealth by World Bank income group



Other health workers per 100,000 population Global and Commonwealth by World Bank income group



ISSUE FOR THE COMMONWEALTH

- Inadequate financial data on which to base projections, planning, and decisions.
- Inadequate workforce data on which to base projections, planning, and decisions.

KEY RECOMMENDATIONS – not just for mental health

1. By 2020, all Commonwealth countries have an electronic data base of their total health workforce (licensed and not currently licensed) which includes, but is not limited to, information about classification, highest qualification, age, total length of service, and deployment history.
1. By 2022, all Commonwealth countries have developed forward five year projections, including funding requirements, for their total health workforce and an implementation plan to meet those projections for recruitment to education, recruitment to the workforce, and retention in the workforce.